



FlashJet4800™ CD/DVDColor Imager



Operator's Manual

COPYRIGHT

Copyright © 2002-2007 R-Quest Technologies, LLC.
Copyright © 2007 Global DiscWare, Inc.

All rights reserved. This manual and the software described in it are copyrighted with all rights reserved. No part of this publication may be reproduced, transmitted, transcribed, stored in a retrieval system or translated into any language in any form by any means without the written permission of Global DiscWare, Inc.

TRADEMARKS

R-Quest, R-Quest by Global DiscWare, CopyQuest, FlashJet 4800, Powered By R-Quest and Powered By Global DiscWare are trademarks of **Global DiscWare, Inc.** Other brand names and product names are trademarks or registered trademarks of their respective companies. **Global DiscWare Inc.** may also claim other names, words or phrases contained in this manual as trademarks.

PIRACY / ILLEGAL COPYING

The TCP series copiers are designed to help you easily reproduce material for which you own the copyright or have obtained permission from the copyright owner to make copies. Unless you own the copyright or have permission from the copyright owner to make copies, you may be violating copyright law and be subject to payment of fines, damages and / or other remedies. *Global DiscWare Inc.* accepts no responsibility for the use or misuse of this equipment for illegal purposes. If you are uncertain about your rights, contact your legal advisor.

WARRANTY

Global DiscWare, Inc. (hereinafter "Global DiscWare") warrants its Products to be free from defects in materials and workmanship under normal and proper usage for the period of one year from the date of shipment from Global DiscWare or from Global DiscWare's authorized, manufacturing subcontractor to an authorized Global DiscWare distributor or to an End-User. "End User" means that person, firm, or corporation which first uses the Product on a continuous basis in connection with its business operation. "End User" does not include any subsequent purchaser or user of the Product.

THIS WARRANTY IS IN LIEU OF AND EXCLUDES ALL OTHER REPRESENTATIONS MADE, BOTH EXPRESS AND IMPLIED, INCLUDING WITHOUT LIMITATION, THE IMPLIED WARRANTIES OF MERCHANTABILITY AND FITNESS FOR A PARTICULAR PURPOSE.

Global DiscWare further warrants that the goods sold are as described, but no promise, description, affirmation of fact, sample model or representation, oral or written shall be part of an order, unless set forth in these terms and

conditions, or are in writing and signed by an authorized representative of Global DiscWare. This warranty does not apply to any Product which has been subject to misuse, negligence, accident or normal wear and tear - or to any Product which has been modified or repaired, improperly installed, altered, or disassembled -except according to Global DiscWare's written instructions.

This warranty is subject to the following further conditions:

- 1) This warranty is limited to the electronic and mechanical performance only, as expressly detailed in the Product specifications and NOT to the imbedded software, firmware or to third party software.
- 2) This warranty shall not apply to any Products which are stored, or utilized, in harsh environmental or electrical conditions outside Global DiscWare's written specifications.
- 3) This warranty is applicable only to Products shipped from Global DiscWare or from its authorized manufacturing subcontractor subsequent to June 1, 2007.
- 4) This warranty shall be valid only if the Product was purchased by the End User from an authorized Global DiscWare Distributor/Reseller.
- 5) Heavy use (per recorder or printer, 12,000 discs / 100 cartridges) may require consumable items such as printers or recorders to be serviced within the warranty period. Parts replaced in the course of a service are warranted to be free of defects in material and workmanship for a period of ninety (90) days, or until the expiration of the original warranty (whichever is the later), and are subject to the same service interval requirements.
- 6) Removal of the Global DiscWare / R-Quest by Global DiscWare Label or Serial number from the product will void this warranty.
- 7) Inkjet Printers Only: Use only the appropriate genuine HP cartridges in the FlashJet 4800 and Si1000 printers. Using, or attempting to use cartridge refills or attempting to 'bulk ink' the printers will void this warranty.

Purchaser's Remedies

If a Global DiscWare Distributor or an End User desires to make a warranty Claim, the Distributor or End User shall, if requested by Global DiscWare, ship the Product to Global DiscWare's authorized service facility, postage or freight prepaid. Global DiscWare shall, at its option, take one of the following two courses of action for any Products which Global DiscWare determines are defective in materials or workmanship:

- 1) Repair or replace the Product and ship the Product to the End User or to the authorized Global DiscWare Distributor, postage or freight prepaid; or
- 2) Replace with a new product and ship the product to the End User or to the authorized Global DiscWare Distributor, postage or freight prepaid.

PURCHASER'S REMEDIES SHALL BE LIMITED EXCLUSIVELY TO THE RIGHT OF REPLACEMENT OR REPAIR AS PROVIDED AND DOES NOT INCLUDE ANY LABOR COST OR REPLACEMENT AT END USER'S SITE. GLOBAL DISCWARE SHALL NOT BE LIABLE FOR ANY CONSEQUENTIAL DAMAGES RESULTING FROM ANY BREACH OF THIS WARRANTY, INCLUDING WITHOUT LIMITATION, ANY DAMAGES RESULTING FROM PROPERTY DAMAGE, PERSONAL INJURY OR BUSINESS INTERRUPTION.

Governing Law and Venue

The sale and purchase of Products covered hereby and all terms and conditions of this Warranty shall be governed by the laws of the State of Minnesota, and any disputes hereunder shall be venued in the Hennepin County District Courts in Minneapolis, Minnesota.

If Your Product Requires Support

If your product requires servicing, you should first contact the place of purchase and request support. If the service request cannot be completed by the place of purchase, you should contact Global DiscWare directly using one of the following methods:

E-Mail: support@globaldiscware.com
Telephone: (800) 859-6927
Fax: (877) 839-0039

Before shipping any item to *Global DiscWare*, first obtain an RMA (Return Material Authorization) Number from *Global DiscWare* support. This number must be placed on the outside of the product packaging where it can be easily found otherwise the item will be refused and returned at the sender's expense.

All products returned to *Global DiscWare* under warranty MUST be in original Global DiscWare / *R-Quest* by Global DiscWare supplied packaging. If you do not have the original packaging, new packaging can be supplied for a charge. Please contact Global DiscWare for the cost of replacement packaging, which may vary based on the product, and your location. Your warranty will be voided if original Global DiscWare / *R-Quest* by Global DiscWare packaging are not used.

Within the first 30 days of warranty, Global DiscWare will cover the cost of shipping to the Global DiscWare factory via UPS Ground or other similar transportation method; otherwise you are responsible for the cost of shipping the product to Global DiscWare.

During the warranty period, Global DiscWare will cover the cost of returning the repaired product to you via UPS Ground or other similar transportation

method. If you require a more urgent transportation method, upgrades can be arranged for a charge, which in all cases must be pre-paid.

TABLE OF CONTENTS

SYSTEM DESCRIPTION	8
OPERATING ENVIRONMENT	9
ARE YOU NEW TO CD/DVD PRINTING?	10
<i>Can I use my existing label designs?</i>	<i>11</i>
UNPACKING AND INSPECTING	14
BOX CONTENTS	17
INSTALLING THE IMAGER.....	18
IMAGER PREPARATION.....	20
CHECKING IMAGER-TO-AUTOLOADER ALIGNMENT.....	22
INITIAL CD/DVD PRINTING CHECK.....	23
CD/DVD LABEL CREATION.....	24
OPTIMIZING PRINT QUALITY SETTINGS.....	25
IMAGER-TO-AUTOLOADER ALIGNMENT.....	27
<i>To adjust Imager-to-Autoloader Alignment:.....</i>	<i>29</i>
CHECKING INK LEVEL	30
DISC LABEL CENTERING (IMAGER CALIBRATION)	31
SETTING PRINT LIMITS AT THE INSIDE AND OUTSIDE DIAMETER	35
SUPPORT FOR 80MM CD/DVDs AND BUSINESS CARDS	35
TROUBLESHOOTING.....	36
<i>The ink stays wet:.....</i>	<i>36</i>
<i>The Imager gives tray errors after a disc is inserted:</i>	<i>36</i>
<i>The Imager is not being recognized by the Autoloader:</i>	<i>36</i>
<i>My labels are not centered on the discs:.....</i>	<i>36</i>
<i>The Imager is printing in areas of the discs that are not coated:</i>	<i>36</i>
<i>The Imager does not accept my *.prn files:</i>	<i>37</i>
<i>The black areas of my labels are too wet:.....</i>	<i>37</i>
<i>Printing takes too long:</i>	<i>37</i>
<i>Print quality is not acceptable:</i>	<i>37</i>

System Description

Your new Global DiscWare FlashJet 4800 CD/DVD Imager incorporates a commercial grade HP print engine. It provides outstanding color or black and white printing on CDs or DVDs intended for use with inkjet printers. Unlike many competitive CD/DVD printers, your FlashJet 4800 uses standard HP #56, #57, and #58 print cartridges that are available from your local office supply store. You do not have to pay a premium for private labeled ink cartridges!

CD/DVD labels can be created using virtually any graphics program, or via the TrueNet Label Designer. You will have to set the page size and label image location properly. You may print CD/DVD labels either before or after duplication, but we recommend printing after duplication. Remember, you can only print on CDs or DVDs intended for inkjet printing.

We strongly discourage using adhesive labels on non-printable CD/DVDs with the FlashJet 4800 Imager, or any other Global DiscWare printing or duplication equipment. Damage caused by using adhesive labels will not be covered under warranty.

You can use existing CD/DVD label files with your new FlashJet 4800 CD/DVD Imager as long as the FlashJet 4800 Imager driver is installed on your PC. The label files are processed through our driver to create an appropriate *.prn file. You cannot use label files that have been "ripped" (processed) for any other printer. Consult your TrueNet manual for additional details.

Global DiscWare TrueNet Networking Software provides a number of unique advantages for the creation and use of CD/DVD labels. A basic label editor is built in for users who do not have dedicated CD/DVD label software, or a preferred graphic program. Label files can be stored as *.prn files ripped for a specific printer, stored as an*.rpt (R-Quest Print Template) file that is not printer specific, or ripped for the printer on the target duplication system without being stored. You do not have to specify which printer is on a given a Global DiscWare Autoloader System. TrueNet will automatically create the proper *.prn file when the job is assigned to a duplication system.

The appearance, durability, and drying time of the discs you produce will depend primarily upon the brand of printable CDs or DVDs you use. Printable CDs and DVDs are available in a wide range of prices, surface colors, and surface treatments. We have had excellent results using discs from all of the major manufacturers, so we do not restrict you to specific CD or DVD brands.

The Global DiscWare FlashJet 4800 CD/DVD Imager does not support printing on jewel case inserts. The discs are so attractive you will not want to hide them! Like all of our products, the FlashJet 4800 Imager is sophisticated, but not complicated.

The Quick Start sections of this manual will have you printing discs a few minutes after your Imager is installed.

Operating Environment

Your FlashJet 4800 Imager should be used in a climate-controlled environment free of dirt, dust, excess humidity, excessive heat, and electro-magnetic interference. Excessive dust and dirt can contaminate printed discs. Excessive humidity can extend ink curing time, and may also adversely affect printed surface durability.

Maintaining a proper operating environment will also assure maximum life of your FlashJet 4800 Imager. It should be noted that the same contaminants that adversely affect your new Global DiscWare Imager will also adversely affect the quality of the discs you produce.

Use only HP #56, #57, and #58 Inkjet Cartridges in your FlashJet 4800 Imager. Using non-HP cartridges, or refilling HP cartridges, will void your warranty.

Global DiscWare is concerned about the environment. We encourage you to properly recycle used ink cartridges. Your office supply source should be able to assist you with ink cartridge recycling.

The DC Power Supply should not be placed on the floor where it could be subjected to physical abuse, moisture, or water damage. Place the DC Power Supply on a table top surface near your Imager.

Keep the CD/DVD Tray inside the Imager unless you are loading or unloading discs. The FlashJet Tray mechanism is designed for continuous commercial use, but it can be damaged by abuse when it is extended outside the Imager's enclosure.

Are you new to CD/DVD Printing?

Most computer users are familiar with inkjet printing on paper, but many people have no experience with the differences between printing on paper and printing directly on CDs or DVDs with inkjet compatible coatings. This section of the manual gives you a brief overview of CD/DVD printing.

Most early CDs, and many current CDs, are CD Audio discs which play at a relatively slow rotating speed we call 1X. (For the technically curious, Audio CDs rotate at a speed that varies from about 600 rpm at their inner diameter where playback starts to about 300 rpm at their outer diameter where playback ends.) Applying pre-printed, or post printed, self-adhesive paper labels became a low cost and popular way for end users to identify and decorate discs they recorded themselves. An argument can even be made that a properly applied label helped protect the delicate metalization layer it covered. As optical disc technology advanced, more discs were used for data recording and recovery, and rotational speeds increased to improve data transfer rates.

Some current drives rotate at speeds as high as 50X. At these high rotational speeds the balance of the disc is critical. An off-center label, or a label not fully bonded in place, may cause the disc to wobble. It is this wobbling that creates the noise you sometimes hear, especially in laptops. In a worst case scenario the disc, or even a drive, may be damaged by a wobbling disc. Many optical disc drive manufacturers forbid the use of self-adhesive labeled discs in their products.

The solution to this problem is to use optical discs with an inkjet-compatible coating, and an inkjet Imager that accommodates optical discs. Although conceptually identical to inkjet printing on paper, printing aesthetically pleasing and functional labels on CDs and DVDs requires a few additional considerations.

These considerations include:

- What type or brand of discs should I use?
- Can I use my existing label designs?
- What is “ripping”?
- Can I use my existing label program(s)?
- Are there any special handling considerations for inkjet-printable discs before and/or after printing?
- Can I use third party ink cartridges, or refill my empty HP ink cartridges?
- When should I use HP #56, HP #57, or HP #58 ink cartridges?

What type or brand of discs should I use?

The appearance, durability, and drying time of the discs you produce will depend primarily upon the brand of inkjet-printable CDs or DVDs you use. Inkjet-printable CDs and DVDs are available in a range of prices, surface colors, and surface treatments. We have had excellent results using discs from all of the major manufacturers, so we do not restrict you to specific CD or DVD brands. Feel free to experiment with the various print quality settings available in our TrueNet Label Designer and Imager driver to maximize the appearance of the labels you create and print. There are no hard and fast rules. Each vendor's printable coating will respond differently to the quality settings available.

Special Notes:

- You must use inkjet-printable CDs and/or DVDs with your R- Quest FlashJet Imager.
- Do not try to print on CDs or DVDs intended for use with thermal Imagers.
- Inkjet ink will not print properly, or cure properly, on disc surfaces intended for thermal Imagers.
- Do not try to print on ordinary CDs or DVDs that do not have an inkjet compatible coating. Inkjet ink will not print properly, or cure properly, on ordinary CDs and/or DVDs.
- Do not use CDs or DVDs with self adhesive labels in your R- Quest FlashJet Imager, or in any R- Quest Duplication or Printing equipment.

Can I use my existing label designs?

You can use existing label designs as long as the FlashJet Imager driver is installed on your PC. You cannot use existing *.prn files "ripped" for a different printer. (See the next paragraph for a brief description of "ripping".) To use an existing label design you must:

1. Open a saved version of your label file using the graphics program that created it.
2. Select File | Print.
3. Select the Global DiscWare FlashJet 4800 as your Printer.
4. Mark the "Print to File" check box and click the "Print" button.
5. Type a name for your label and include ".prn" at the end of the file name, then click OK.

It may not be obvious where the *.prn file is outputted, so use the Windows Search function, if necessary, to locate it.

What is “ripping”?

RIP is an acronym for Raster Image Processor. A Raster Image Processor translates a label file's data (bitmap images, vector graphics, fonts, JPEGs, etc.) into a rasterized (bitmapped) file unique to a specific type of Imager. Actually, all Imager drivers convert (RIP) the native graphic files they process to print properly with their Imager's hardware. The ripping operation adds specific information to the label file that tells the print head where and how to place its dots of ink. When you use an Imager attached to your computer, the ripping operation is handled automatically by the Imager driver. In most cases you may not even be aware of the ripping operation. Ripping becomes a consideration when you must transfer a label file to a printing and/or duplication and printing system for use during an automated printing process. The ripped label file you transfer using either a network or a disc will typically be called a *.prn file.

Can I use my existing label program(s)?

Yes, you should be able to use virtually any CD/DVD Labeling or graphics software to produce labels for your R- Quest FlashJet Imager, as long as the FlashJet Imager driver is installed on your PC.

Are there any special handling considerations for inkjet-printable discs before and/or after printing?

All CDs and DVDs should be handled only by their edges to minimize contamination and damage. CDs and DVDs should also be carefully stored in their original packaging until they are used. Their storage environment should avoid exposure to extreme humidity. The coating that allows inkjet printing on CDs and DVDs is typically not as durable as the disc surface to which it is applied. Any scuffs or markings in this coating may affect print quality. In addition, humidity may soften this coating, and/or slow down the curing process. To minimize the adverse affects of humidity, we suggest you remove your CDs and DVDs from storage and place them in the duplication environment at least 24 hours before they are used. Even after the ink has cured, touching the label surface may leave a mark on your label. Handle CDs and DVDs by their edges.

Can I use third party ink cartridges, or refill my empty HP ink cartridges?

The short answer is NO! Using third party ink cartridges, or refilling empty HP ink cartridges, will void your warranty. It should be noted that Global DiscWare, unlike some of our competitors, does not require you to purchase your ink cartridges from us. You may buy replacement HP #56, #57, or #58 cartridges from any source you choose.

When should I use HP #56, HP #57, or HP #58 ink cartridges?

Your R- Quest FlashJet Imager has two ink cartridge holders, but it can use three different HP ink cartridges: #56 Black, #57 Tri-color, or #58 Photo. The table below shows acceptable ink cartridge combinations:



To Print:	#57 Holder:	#56/58 Holder:
Best Graphic Images	#57	#56**
Photographic Quality	#57	#58
Basic Graphics w/o Black	#57	Empty*
Monochrome Black	Empty*	#56**

Notes: *= You can leave a cartridge in the holder for these operations.

If you are going to print large areas of black use the #56 cartridge instead of the #58 cartridge. Although this may have a small effect on image quality, it will reduce the amount of ink on the surface of the disc. This will expedite curing and minimize the possibility of label handling damage.

**= Although we refer to the #56 cartridge as Black, it produces excellent grey scale images.

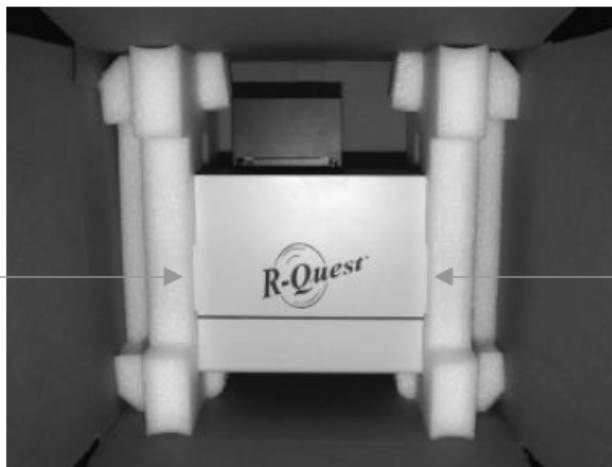
Unpacking and Inspecting

Before you remove the FlashJet Imager from its shipping carton, make sure you have cleared a suitable installation site. You may place it directly on your new Global DiscWare Automated Printing or Publishing System.

Carefully remove your FlashJet 4800 from its shipping carton and verify that all parts are present. If there are missing or damaged parts contact Global DiscWare or an authorized distributor immediately to correct any mis-packed or missing parts.

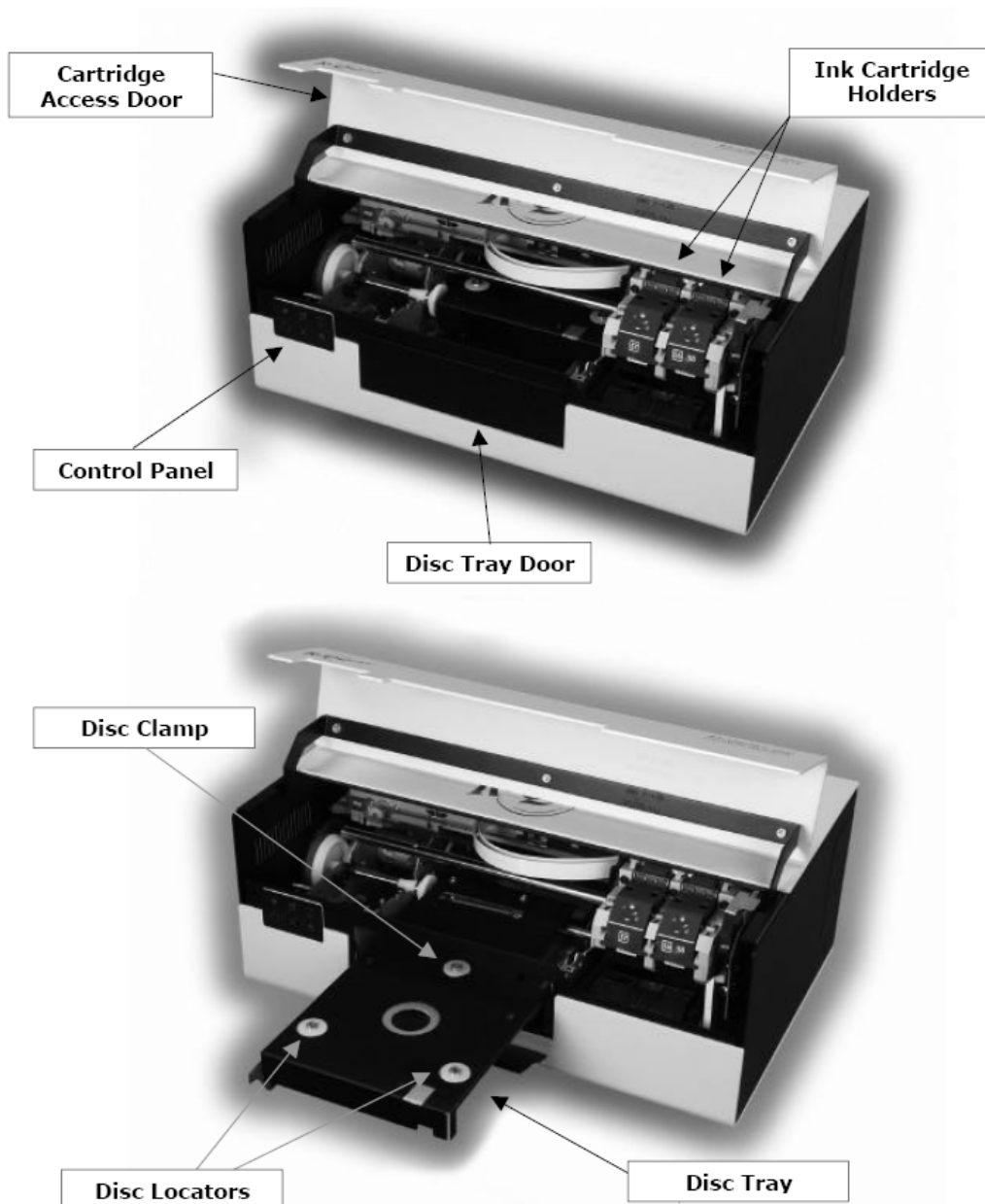


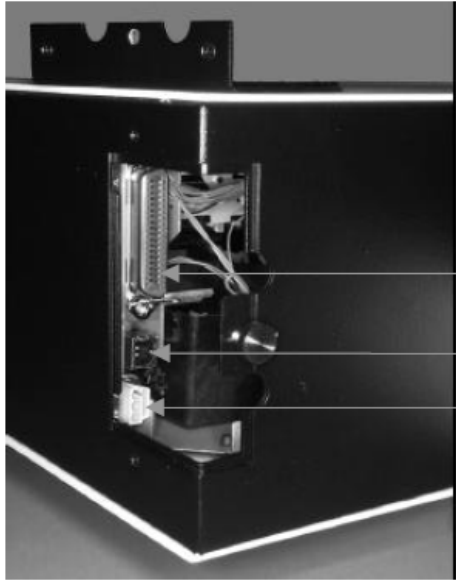
Remove the cardboard Accessories Tray that fits into the two foam inserts. The Accessories Tray contains the AC Power Cord, DC Power Supply, and Ink cartridges.



Using the handles provided in the foam inserts, remove the Imager with the left and right foam packing details attached. Place the Imager and foam details on a suitable work surface and slide the foam details off of the Imager. After you remove the plastic bag, you are ready to install the Imager. There are no external pieces of tape or internal shipping fasteners to remove.

Let's take a quick tour of your new Global DiscWare FlashJet 4800 Imager. The photographs below highlight the unit's controls, access doors, and connections.



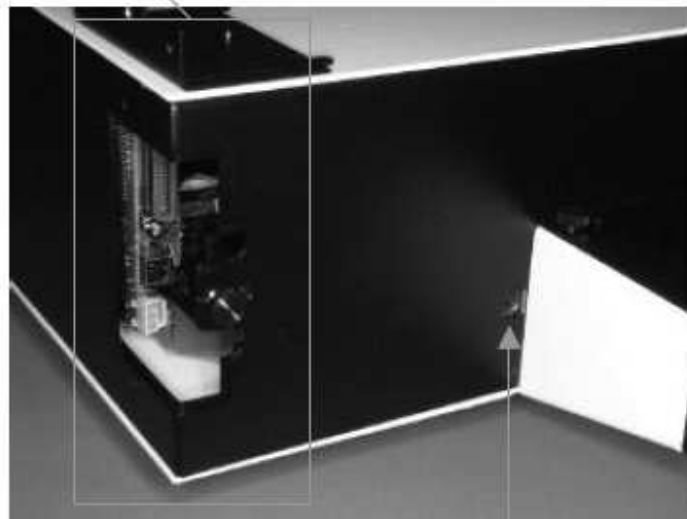


Connector access door at the rear corner of the Imager cabinet

Parallel Port used with *R-Quest* Automated Systems

USB Port used with Windows 2000 or XP PCs

Power Connector for the DC Power Supply



Connector for *R-Quest* Autoloader's Tray Control Cable

Box Contents

Your shipping carton should contain the following items, in addition to this manual.

- The FlashJet 4800 Imager.
- An AC Power Cord.
- A DC Power Supply.
- Two inkjet cartridges (#56 and #57)
- A CD-R containing test label files, two Imager alignment files, and the FlashJet 4800 Imager driver.
- Lots of shipping material which should be placed back in the carton and saved. Use this custom packaging if you ever have to transport the system to another location, or return it for maintenance or repair. Shipping this system in unauthorized packaging may void warranty coverage.
- A warranty card which should be filled out and returned as soon as you verify your Imager is functioning properly.

The FlashJet 4800 Imager can be used with TrueNet Networking software and hardware. Consult your TrueNet Operators Manual for additional information on the use of this Imager, and the features of TrueNet CD/DVD Label Designer Software.

NOTE:

If your FlashJet 4800 is damaged during shipment, please contact the freight carrier first, and then contact your distributor or Global DiscWare.

You need to save your packaging materials so that if the need arises you can return your Autoloader for service. Sending a unit to Global DiscWare without the original packaging will void the warranty. This packaging was designed specifically for shipping your Autoloader. Other packaging may not be as suitable. If you have already disposed of your packaging materials, you can receive a new set from Global DiscWare for a fee.

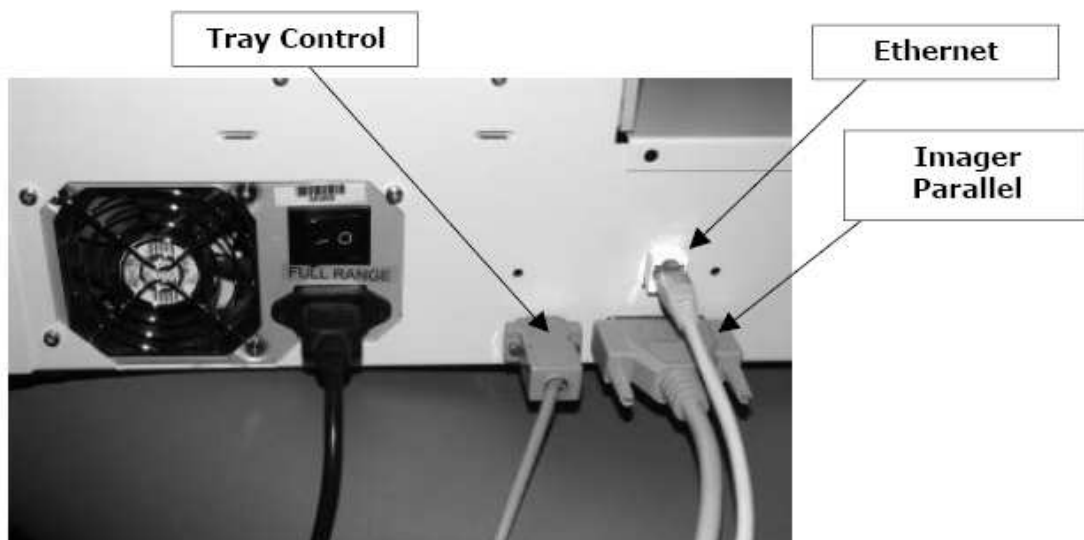
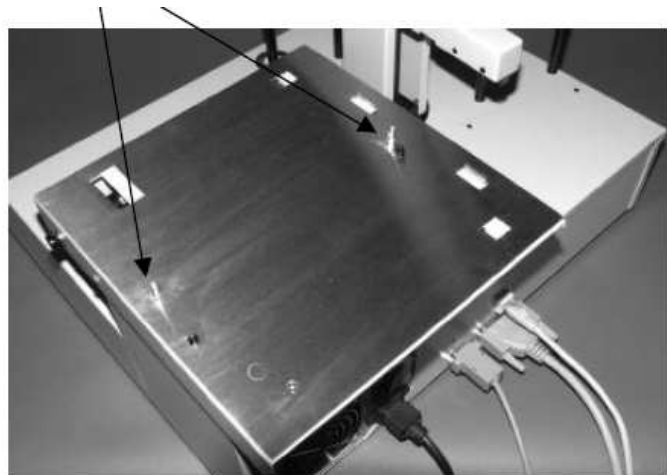
Installing the Imager

The FlashJet 4800 Imager primarily is used and supported on R-Quest / Global DiscWare Automated Printing or Automated Publishing Systems. These instructions therefore only cover installation on an R-Quest / Global DiscWare Autoloader already prepared for a FlashJet 4800 Imager.

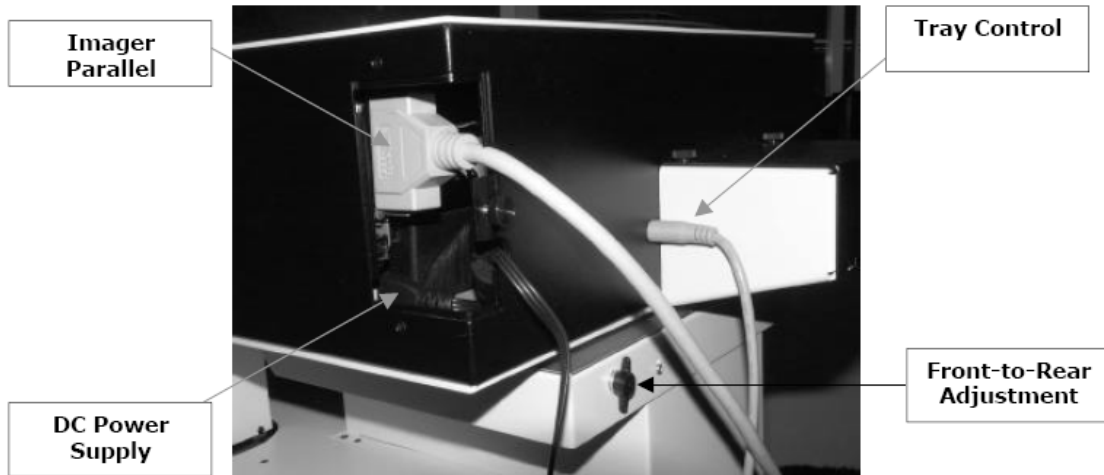
The two large chrome pins on the Imager Mounting Plate go into two holes in the Imager Bottom Plate. The two smaller black pins should not be removed. They will not interfere with the FlashJet Imager.

The Printer Support Plate on duplication systems with two bays of recorders will be on a slight angle. You still use the tall chrome pins as shown above. (Consult your Duplication System Operators Manual for details.)

Install the Parallel Port, Ethernet Port, and Tray Control Cables on your new Global DiscWare Automated Printing or Publishing System as shown in the photo below.

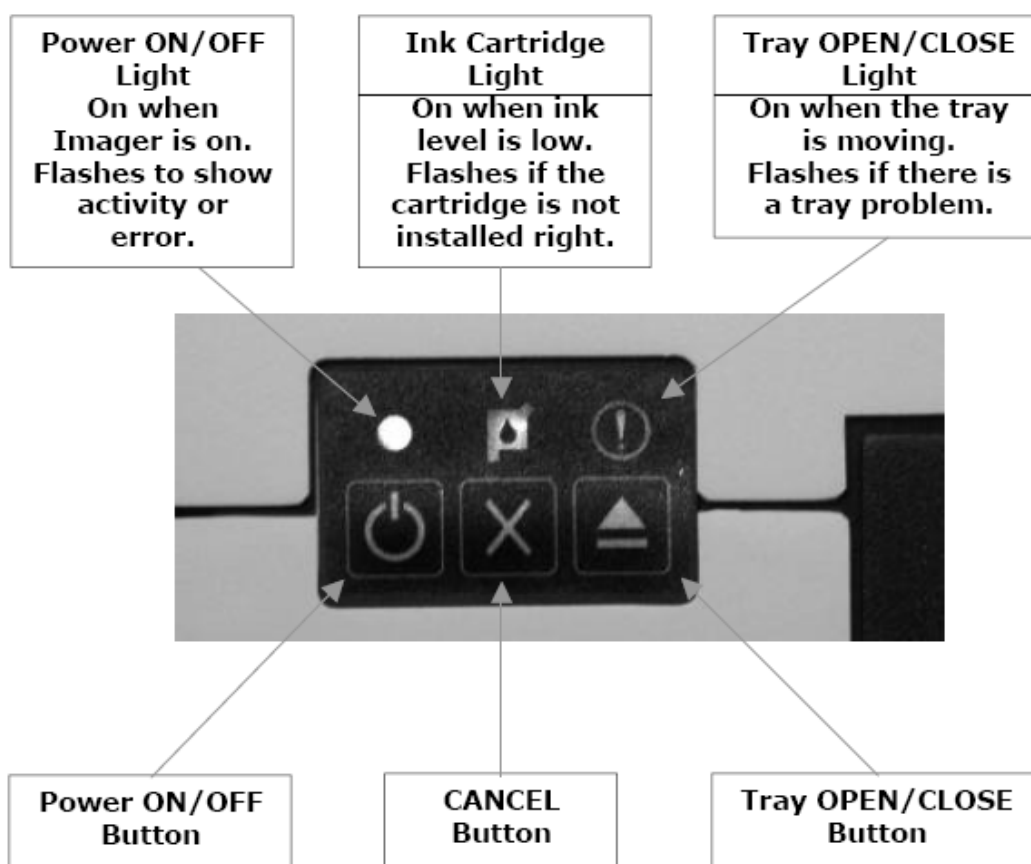



Connect the Parallel Port, Tray Control, and DC Power cables to the Imager as shown below. Note the Front-to-Rear Adjustment Knob which you may use later for Imager alignment. We recommend that you place the Imager's DC Power Supply module on the table top near the unit, rather than the floor, to protect it from damage.



Imager Preparation

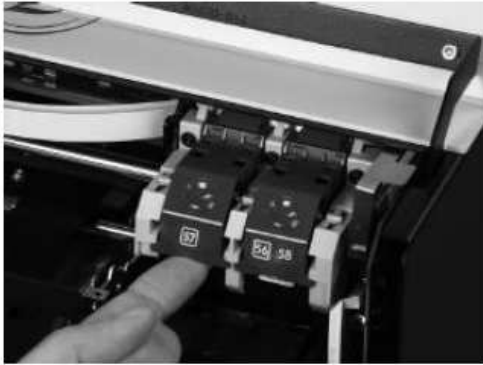
Once the Imager is properly located on its mounting plate, you can plug the DC Power Supply into an AC receptacle and turn the Imager on.



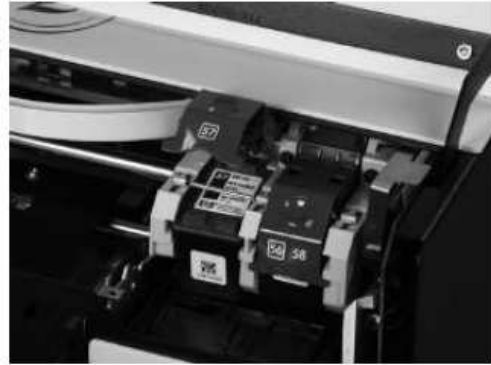
To turn the Imager ON, press the  Button. The Imager will perform a power on self test. The Imager is ready when the power on LED stops flashing and stays on.

When the Imager is ready, open the ink cartridge access door and wait until the ink cartridge carriage stops moving. The FlashJet 4800 Imager holds two HP Ink Cartridges. The left ink cartridge holder always holds an HP #57 Tri-Color ink Cartridge. The right ink cartridge holder may hold either an HP #56 Black ink Cartridge, or an HP #58 Photo ink cartridge. If you are printing graphic images and text with black text and/or objects, install a #56 Black ink cartridge in the

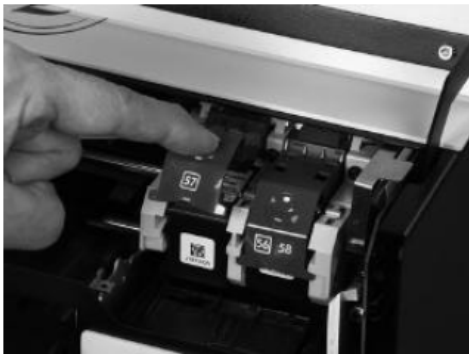
right ink cartridge holder. If you are printing photographic images and want the best possible color rendition, install a #58 Photo ink cartridge in the right ink cartridge holder. The photographs below show the proper way to open and close the ink cartridge holders.



To open the ink cartridge holder, pull the bottom of the latch towards you.



Remove the protective film from the ink cartridge and insert it fully in the holder.



Close the ink cartridge holder by pressing on the finger recess. Do not apply excessive force! If the latch does not close easily, make sure the ink cartridge is fully seated in the holder.

After both ink cartridges are installed, close the Ink Cartridge Access Door. The Imager will check the Ink Cartridge Holders to make sure both cartridges are properly installed. When the ink cartridge check is successfully completed, the Power ON Light will be on constantly and the Ink Cartridge Light will be off.

Checking Imager-to-Autoloader Alignment

If you ordered a complete system, your new Global DiscWare Automated Printing or Automated Publishing System was aligned and tested at the factory before it was shipped. This initial alignment check will let you know if Imager alignment has shifted due to shipping and/or handling abuse. If you are installing a new FlashJet Imager on an existing system, you must check Imager-to-Autoloader alignment. If your system does not meet the alignment requirements presented below, refer to the Advanced Imager Operations – Imager-to-Autoloader Alignment section of this manual.

To check Imager-to-Autoloader alignment, perform the following sequence from the Autoloader's control panel and LCD display:

- Make sure the Imager is ON, and the Power Light is ON continuously.
- From the main menu screen, scroll down to Utilities Menu and press Enter.
- From the Utilities Menu, scroll down to Loader Utilities and press Enter.
- From the Loader Utilities menu, scroll down to Loader Utilities again and press Enter.
- From the Loader Utilities sub menu, scroll down to Calibrate and press Enter.
- Place a few CDs or DVDs in the first supply hopper of the Autoloader. (Refer to the Autoloader's Operators Manual if you are not sure which supply hopper is accessed first.) You do not have to use printable discs for this alignment check.
- Scroll down from Calibrate to Insert Printer and press Enter. A disc should be transferred from the supply hopper to the Imager tray, and the tray should close.
- Scroll down from Insert Printer to Accept Printer and press Enter. The inserted disc should be transferred from the Imager tray to the accept hopper, and the tray should close.
- Scroll up from Accept Printer to Insert Printer and press Enter. Another disc should be transferred from the supply hopper to the Imager tray, and the tray should close.
- Scroll down from Insert Printer to Reject Printer and press Enter. The inserted disc should be transferred from the Imager tray to the reject area in front of the CD/DVD Recorders, and the tray should close.

If all of these operations are completed successfully, the Imager is properly aligned to the Autoloader. If any of these operations are not completed successfully, refer to the Advanced Imager Operations – Imager-to-Autoloader Alignment section of this manual.

Initial CD/DVD Printing Check

The purpose of this check is to make sure your FlashJet 4800 ink cartridges are properly installed, the CDs and/or DVDs you are using are compatible with the inkjet printing process, and you are able to transfer appropriate label files to your new automated system. One or more Test Label image files have been supplied on the CD-R that came with the Imager.

1. If they are not already ON, turn ON the FlashJet 4800 Imager and Global DiscWare Autoloader.
2. From the main menu on the LCD Display, scroll down to the Start Print only menu selection and press Enter.
3. At the Read New Print File? prompt, press No. One or more Test Label files may already be loaded on your system's HDD. If there is a Test Label file on your system, skip step 4 and proceed to step 5. If there are no Test Label files on your system, proceed to step 4.
4. Press the Stop key to return to the main menu's Start Print Only prompt, and press Enter. At the Read New Print File? prompt, press Yes, and follow the on-screen instructions to load Test Label files on your system's HDD.
5. Place one or more printable CDs or DVDs in the first supply hopper of your Global DiscWare Autoloader. (Consult your system's Operator Manual if you are not sure which supply hopper is used first.)
6. Select one of the Test Label files displayed on the LCD screen and press Enter.
7. At the "Quantity?" Prompt, use the Up Arrow key to select "1", and press Enter.
8. The Test Label file will be printed and the printed disc will be placed in the accept hopper. If the label was properly printed, your system is ready for use. If there is a problem with the test label, refer to the appropriate section of the Advanced Imager Operations portion of this manual.

CD/DVD Label Creation

Basic labels can be created using the TrueNet Label Editor. (Refer to the TrueNet Operator Manual for detailed instructions.) If the Imager driver is installed, you can also output *.prn files using the “Print to File” function of virtually any graphics application. (Refer to the Windows Driver Quick Start Guide for detailed instructions.) There are a few key concepts to keep in mind as you prepare and use label files with the FlashJet 4800 CD/DVD Imager:

- You cannot use any *.prn files that were “ripped” for a printer other than a Global DiscWare FlashJet 4800 Imager. All *.prn files are printer specific.
- The FlashJet 4800 will automatically adjust its print settings based upon the ink cartridges you have installed, but the label files you create may require additional Print Quality setting changes to optimize the appearance of your CD/DVD labels. The two main factors affecting Print Quality are the inkjet compatible coating on the CDs or DVDs you use, and the content of your label. This is why it is important to test your labels using the CDs or DVDs you plan to use for each printing project.
- If your label design includes large areas of black, or black text, we suggest you use the #56 Black rather than the #58 Photo inkjet cartridges. This will minimize both ink cost and ink curing time.
- There are many advantages to using Global DiscWare TrueNet Networking with your FlashJet 4800 CD/DVD Imager:
 - TrueNet knows what type of printer is installed on each autoloader in your network. It will automatically “rip” a label file or template to match each Printing, or Duplication and Printing, system on your network as the job is processed.
 - Labels may be stored as printer specific, “ripped”, *.prn files, or non-printer specific “templates”, *.rpt files. Template files can be easily modified to incorporate content changes.
 - With TrueNet, label files can be stored on any HDD in the network. This includes HDDs in networked PCs. Label files do not have to be loaded on each autoloader’s HDD.

Optimizing Print Quality Settings

FlashJet 4800 CD/DVD Imagers will select default Print Quality settings based upon the ink cartridges it detects in its two ink cartridge holders. For example, the Print Quality settings when a #56 Black cartridge is in the right hand holder will not be as “high” as they would be if a #58 Photo cartridge was detected. If the Imager’s default settings provide acceptable label quality with the media you are using, you do not have to change anything. If you want to optimize your label’s Print Quality follow the procedure described below. (The procedure depicted below is based upon the TrueNet Label Editor.)

Figure 1 – Label Editor Screen

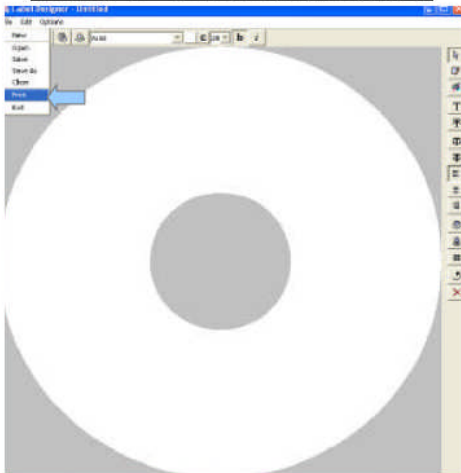
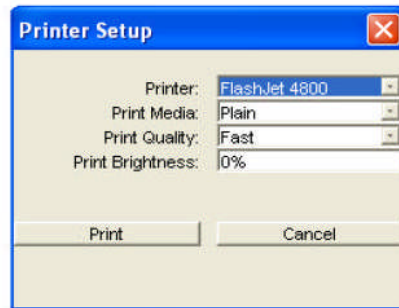
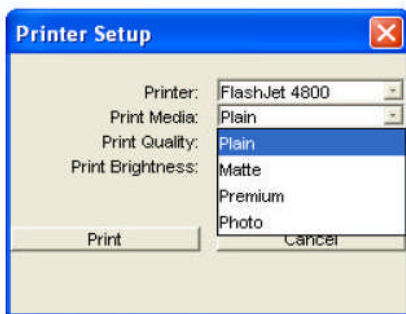


Figure 2



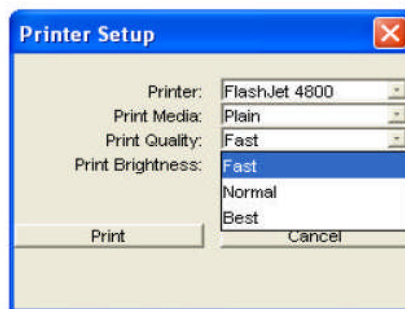
Printer Setup

Figure 3



Print Media Options

Figure 4



Print Quality Options

When you create your labels using the TrueNet Label Designer, print quality optimization controls are available in the Printer Set-up menu (accessed by selecting Print from the File menu). There are four Print Media and four Print Quality options to choose from. In general, each group of options is ranked from lowest quality at the top of each sub-menu to highest quality at the bottom of each sub-menu. It should also be noted that the FlashJet 4800 Imager will modify its internal settings based upon the ink cartridges installed in its holders.

The Print Media and Print Quality settings actually alter inkjet print resolution and vary the quantity of ink deposited on the disc's coating. Increasing inkjet print resolution generally improves the appearance of a label at the expense of print time. Higher quality images typically take longer to print. (This could be a consideration if you are duplicating discs that have a small amount of content on an autoloader system with 4 or more recorders.) Increasing the amount of ink deposited also tends to improve label quality, but too much ink may saturate the coating and never cure properly. Uncured ink is subject to handling damage and, even worse, may transfer to the "lens" surface of an adjacent disc.

Because inkjet-compatible coatings vary from manufacturer to manufacturer, lot to lot, and media type to media type, we unfortunately cannot provide any firm guidelines. Based upon extensive testing with CDs and DVDs from many manufacturers, we recommend that you:

- Avoid setting Print Media to "Plain" because we do not recommend the paper labels this setting was intended for.
- Set Print Media to Premium.
- Set Print Quality to Normal.
- Use #57 Tri-color and #56 Black cartridges for labels that contain graphics and text. The #56 Black cartridge also creates exceptional grey scale images.
- Use #57 Tri-color and #58 Photo cartridges for labels that contain photographs.
- Do a test print using discs from the lot you intend to use in production.
- Modify these basic settings, as required, to optimize label aesthetics, curing time, and duplication system throughput.

Imager-to-Autoloader Alignment

In order to reliably handle CDs and DVDs, the Robot Arm, Robot Arm Tower, and FlashJet 4800 Imager must be properly aligned. If you purchased a complete R-Quest Duplication System, your unit was aligned and extensively tested prior to being shipped. If there was no shipping damage, your system should function properly after you install the Imager. A properly aligned system should handle thousands of discs without a problem, so the easiest way to verify alignment is to run your system. If your system does not handle new, name brand, CDs and/or DVDs reliably, perform the alignment check and adjustment procedure described below.

If you purchased your Imager separately from the autoloader it is being used with, you should check, and if necessary adjust, Imager-to-Autoloader Alignment before you use the system. The alignment check and adjustment procedure that follows should also be used periodically to maintain reliable disc handling.

To check Imager-to-Autoloader Alignment:

1. From the main menu, scroll down to Utilities Menu and press Enter.
2. Scroll down to Loader Utilities and press Enter.
3. Scroll down to Loader Utilities and press Enter. (Yes! You do this twice.)
4. Scroll down to Calibrate and press Enter. (Every manual loader sequence should start with a Calibrate to make sure the Robot Arm and Robot Arm Tower start from their Home position.)
5. Place a small stack of new, name brand, CDs or DVDs in the first supply hopper. (Refer to your Autoloader's Operators Manual if you are not sure which supply hopper is used first.)
6. Scroll down to Load and press Enter. (The Robot Arm should pick up a disc and return to the Calibrate position.)
7. Scroll up to Extended Diags and press Enter.
8. Scroll down to Set Printer and press Enter. (The Robot Arm should move to its Imager setting)

9. Open the Imager tray by pressing the Tray Open button on the Imager's front panel. (Do not disturb the disc on the Robot Arm.)

Your Imager tray, as viewed from above, should look like the photograph in Figure 1 below, and the LCD Display should look like the photograph in Figure 2 below.

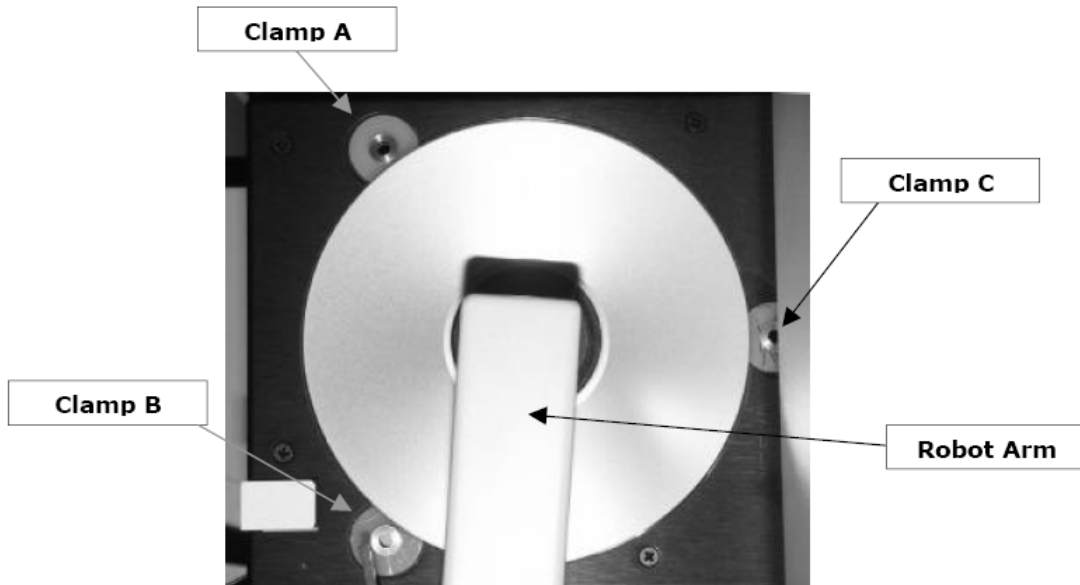


Figure 1 – Top View of the Imager Tray

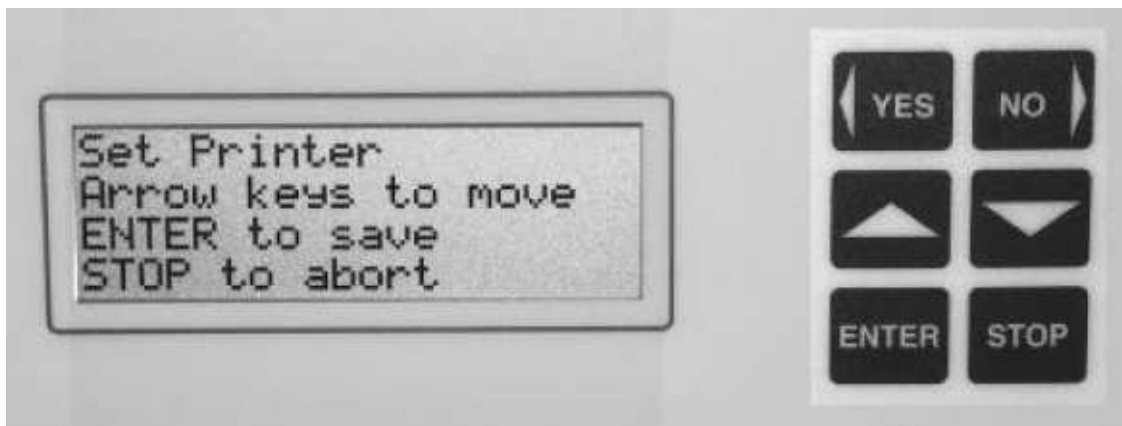
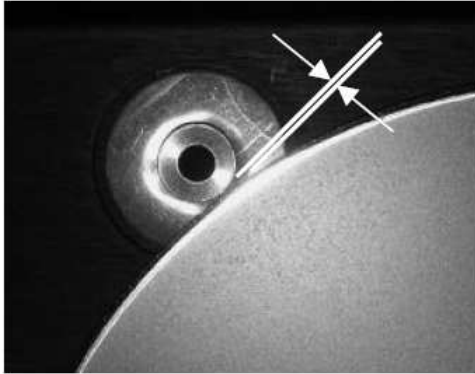


Figure 2 – Imager-to-Autoloader Adjustment Screen

While carefully watching the disc in the Robot Arm, press the Down Arrow key one step at a time until the disc is lowered to a position just above, or slightly in contact with, the Imager tray. Examine the clearance between Clamps A, B, and C as shown in Figures 3 and 4 below.



**Figure 3 – Clamp A
(Disc is too close)**

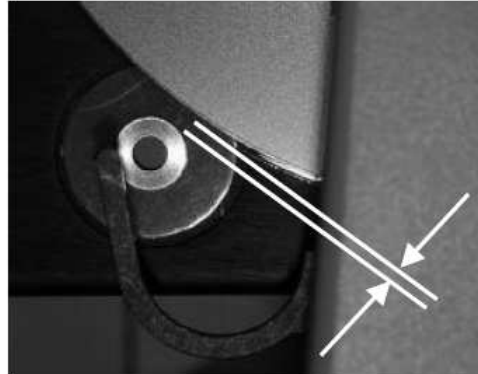


Figure 4 – Clamp B or C

Examine the three clamp locations carefully. (Remember, the edge of the disc may be clear.) The clearance between the disc and Clamp A should be at least 0.020" – the thickness of a 0.5 mm mechanical pencil lead. The clearance between the disc and Clamps B and C should be at least 0.030" – the thickness of a 0.7 mm mechanical pencil lead. If these clearance requirements are met, disc alignment is acceptable. If these requirements are not met, repeat the check procedure making sure that the disc does not get disturbed during Robot Arm positioning. If the requirements are still not met, proceed to the alignment section that follows.

To adjust Imager-to-Autoloader Alignment:

There are two interrelated adjustments that control Imager-to-Autoloader alignment, Robot Arm Location and Imager Front-to-Rear Location. The Robot Arm can be rotated about the center of the Robot Arm Tower by pressing the Left Arrow or Right Arrow Keys. The disc will move along a circular path when the Robot Arm's location is adjusted. The Imager can be moved Front-to-Rear by turning the black adjustment knob located on the right side of the Imager support. Carefully try both of these adjustments to get the feel of their effect on disc location. If the disc is accidentally forced into one of the Imager Tray's brass clamp cylinders it may slip in the Robot Arm's disc clamp. If this happens, you should repeat the alignment check procedure to restore the disc to its nominal position.

When the clearance requirements are met, press Enter to store the new Robot Arm Location. The Imager's Front-to-Rear Adjustment Knob retains its position due to internal friction. There is no lock mechanism on this adjustment.

Repeat the check procedure to verify the adjustment now meets its requirements.

Checking Ink Level

The ink level of the cartridges installed in the FlashJet 4800 can be checked using autoloader utilities. It should be noted that the percent remaining shown is a conservative estimate. The cartridge may still print properly for a while, even if the level shown is 0%.

1. From the top level of the main menu, scroll down to Utilities Menu and press Enter.
2. From the top level of the Utilities Menu, scroll down to Printer Utilities and press Enter.
3. From the top level of the Printer Utilities menu, scroll down to Printer Ink Level and press Enter. The display will show the approximate % of ink remaining in each cartridge.

Disc Label Centering (Imager Calibration)

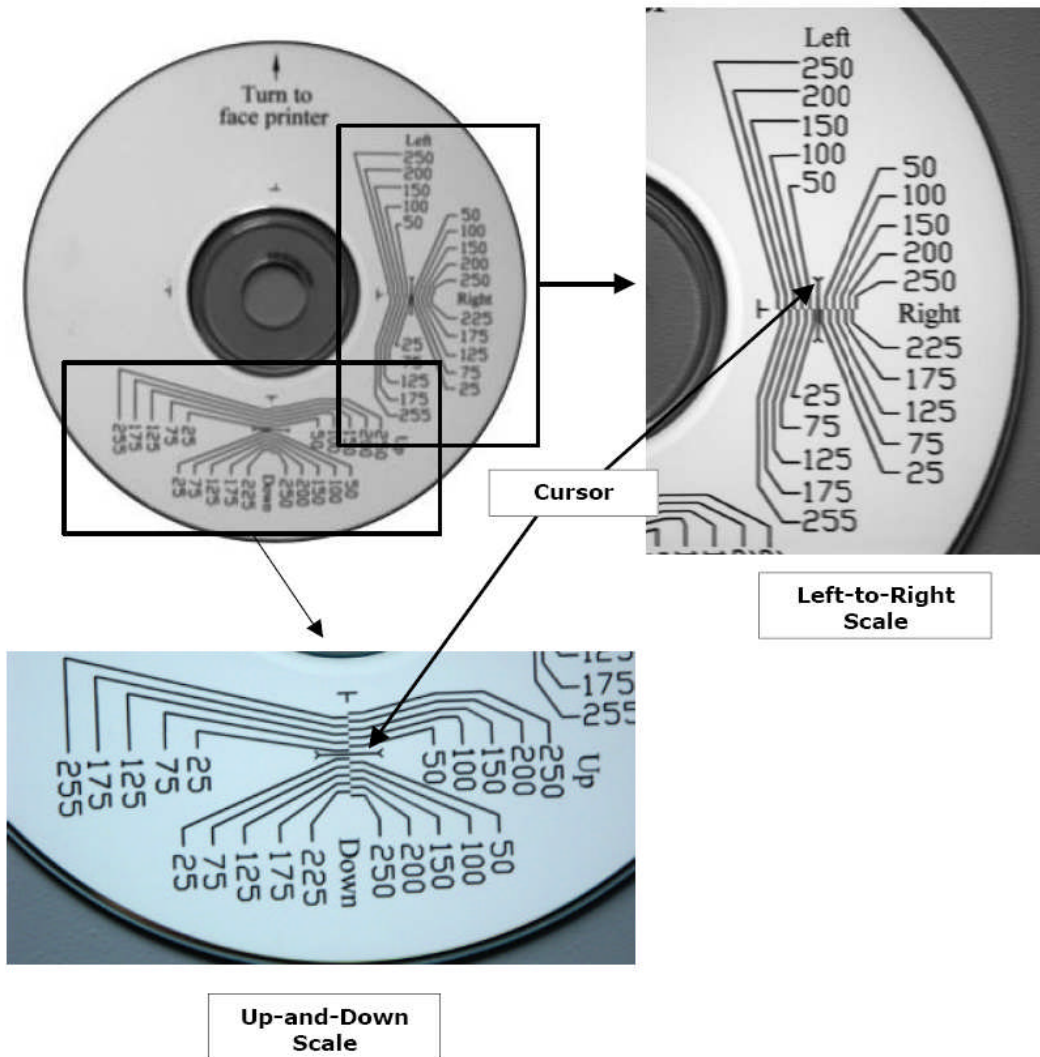
Your FlashJet 4800 CD/DVD Imager was calibrated before it was shipped to you. It should not require initial calibration, unless it was subjected to shipping abuse. To check disc label centering, you will print a CD/DVD with a special print file that creates alignment scales in both Left-to-Right and Up-and-Down directions. You will then rotate the printed disc 180 degrees and use a second special print file to print a Cursor on each of the alignment scales. The position of the Cursor on each of the alignment scales tells you how well your Imager is aligned, how much correction is needed, and in which direction the correction should be made. The two special files are supplied on a CD-R that comes with each Imager. (If you purchased your Imager as part of a complete autoloader system, the files should already be on your unit's HDD.)

To check Imager calibration:

1. From the main menu, scroll down to Utilities Menu and press Enter.
2. From the Utilities Menu, scroll down to Printer Utilities and press Enter.
3. From the Printer Utilities menu, scroll down to Manual Print and press Enter. FJAL1.PRN and FJAL2.PRN should be displayed.
4. Open the Imager tray by pressing the Tray Open button on the Imager's control panel.
5. Insert a printable CD/DVD making sure the disc is contacting the brass clamps in the front of the tray.
6. The LCD Display cursor should be at FJAL1.PRN. Press Enter. When the Tray Open/Close Light begins flashing, press the Tray Close button. Alignment scales will be printed, and the Imager tray will open.
7. Note the arrow that is part of the alignment pattern printed on the disc. Rotate the disc so this arrow points directly into the Imager. (This provides the 180 degree disc rotation we mentioned earlier.) Make sure the disc is touching the two brass clamps in the front of the tray.
8. The LCD Display will change to again show the Manual Print utility. Press Enter and the display will change to the two alignment files. Scroll down to

FJAL2.PRN, press Enter and then press the Tray Close button. Two alignment Cursors will be printed, and the tray will open. The completed alignment disc can now be evaluated.

An alignment disc printed by a perfectly aligned Imager is shown in the photos below, and key alignment features are identified. If the disc you printed looks like this, your Imager is properly aligned.



If either Cursor, or both Cursors, is/are not in the center of their alignment scales, your Imager needs to be calibrated. Refer to the charts and procedure on the pages that follow.

The alignment pattern gives you two pieces of information. The Cursor location tells you which way you have to move and the vernier scale tells you how far you have to move.

If your Cursor is in this region, your Imager is aligned too far to the **RIGHT**. Change alignment to the **LEFT** the amount indicated on the vernier scale. For example, the black line shown requires an alignment change of **75 LEFT**.

If your Cursor is in this region, your Imager is aligned too far to the **LEFT**. Change alignment to the **RIGHT** the amount indicated on the vernier scale. For example, the black line shown requires an alignment change of **175 RIGHT**.

If your Cursor is in this region, your Imager is aligned too far **DOWN**. Change alignment **UP** the amount indicated on the vernier scale. For example, the black line shown requires an alignment change of **75 UP**.

If your Cursor is in this region, your Imager is aligned too far **UP**. Change alignment **DOWN** the amount indicated on the vernier scale. For example, the black line shown requires an alignment change of **175 DOWN**.

To adjust Imager calibration:

1. From the main menu, scroll down to Utilities Menu and press Enter.
2. From the Utilities Menu, scroll down to Printer Utilities and press Enter.
3. The top item in the Printer Utilities menu is Image Alignment. Press Enter.
4. The four items in the Image Alignment menu correspond to the four directions shown on the printed alignment disc. For example, to make a change of 200 RIGHT, scroll down to the Move Right selection and press Enter.
5. Use the four Arrow keys on the keypad to enter the alignment amount of 200. Press Enter when the correct alignment amount is displayed.
6. Use the same procedure if an UP/DOWN correction is also required. When the correction factors have been entered, you should repeat the calibration check to verify your alignment adjustment. (See page 33 for the alignment check procedure.)

Setting print limits at the Inside and Outside Diameter

You can adjust the inside and outside diameters of the label your FlashJet 4800 will print using TrueNet's Label Editor. To adjust the print range inside or outside diameter, use the Options pull down menu and select Settings. The following settings are available:

- Display Units – Preferred unit of measurement. Available options are Inches and millimeters.
- Disc Size – Templates for most standard and mini-disc media.
- Disc Margin – Sets the width of the disc's non-printable, clear outer edge.
- Disc Center Ring Diameter – Sets the distance from the center hole to the stacking ring (a raised ring around the hub of the disc to accommodate stacking). This area is often non-printable.
- Disc Center Ring Width – Sets the width of the stacking ring.
- Hub Size – If you use hub-printable media, this will be the diameter of the center hole. If your media is not hub-printable, this will be the diameter of the non-printable hub (this includes the diameter of the center hole).

Refer to the TrueNet Operators Manual for additional details.

Support for 80mm CD/DVDs and Business Cards

Adapters are available for your FlashJet 4800 Imager that will accommodate many types of business card media. Contact your dealer, distributor, or Global DiscWare for more information.

Troubleshooting

The answers to many questions may be found in this Troubleshooting Guide. In order to keep this troubleshooting guide concise, the reader may be referred to the appropriate sections in the manual.

Troubleshooting Guide Index:

The ink stays wet:

1. The CD/DVDs are not coated for inkjet printing. Replace the media.
2. The CD/DVDs are intended for THERMAL rather than INKJET printing. Replace the media.
3. Too much ink is being applied to the discs. Try different Print Quality settings. Refer to the “Optimizing Print Quality Settings” section of this manual.

The Imager gives tray errors after a disc is inserted:

1. The most likely cause is Imager-to-Autoloader Alignment. Refer to the “Initial CD/DVD Printing Check” section this manual.

The Imager is not being recognized by the Autoloader:

1. Are all of the cables properly installed? See the “Imager Preparation” section.
2. Was the Imager ON when the Autoloader was turned ON?

My labels are not centered on the discs:

1. Was your label artwork centered when you processed it through the TrueNet Label Designer?
2. Your Imager may not be properly calibrated. Refer to the “Disc Label Centering” section of this manual.

The Imager is printing in areas of the discs that are not coated:

1. Adjust the labels inside and/or outside diameter limits using the Options – Settings feature of TrueNet’s Label Designer. Refer to of the TrueNet Manual for further details.

The Imager does not accept my *.prn files:

1. All *.prn files are Imager specific. You can only use *.prn files created for the FlashJet 4800 Imager.

The black areas of my labels are too wet:

1. This usually happens when the #58 Photo cartridge is used for labels with large areas of black, and the Print Quality settings are not optimized. Try replacing the # 58 Photo cartridge with a #56 Black cartridge.
2. If the problem persists, try adjusting the Print Quality settings. Refer to the “Optimizing Print Quality Settings” section of this manual.

Printing takes too long:

1. In general, higher quality printing increases printing time. Try adjusting the Print Quality settings. It should be noted that sometimes “lower quality” settings will produce excellent results with significant reductions in printing time. Refer to the “Optimizing Print Quality Settings” section of this manual.

Print quality is not acceptable:

1. If the printing is faint, or off color, one of your cartridges may be out of ink. Check ink level. Refer to the “Disc Label Centering” section of this manual.
2. If the printing is not flowing or curing properly, the coating may not be inkjet compatible. Try a different media.
3. Many print quality problems result from the compatibility of the CD/DVDs inkjet coating. It may not be simply a manufacturer issue. For example, a manufacturer’s silver media may not work well with a particular label file, inkjet Imager type, or print quality setting, but their white media may do an exceptional job. The key to a consistent print process is finding media that meets your quality and cost objectives. You may find optimum results using white discs from one manufacturer and silver discs from a different manufacturer.
4. To avoid unpleasant surprises in production, test print each new lot of media with the label file you plan to print. This gives you the opportunity to optimize print settings and/or spot a compatibility problem before it affects your production schedule.

R-Quest by Global DiscWare

FlashJet 4800 Imager Manual
Part Number 900-00052-01 Revision 105

Copyright © 2002-2007 R-Quest Technologies, LLC
Copyright © 2007 Global DiscWare Inc.
All rights reserved.

www.globaldiscware.com