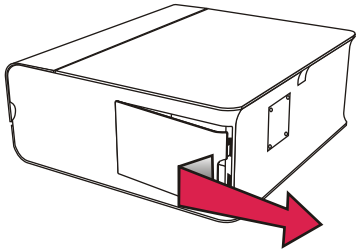


1

Rimage 480i Setup and Installation

Connecting the Power Cord

- A** Remove the side cover.



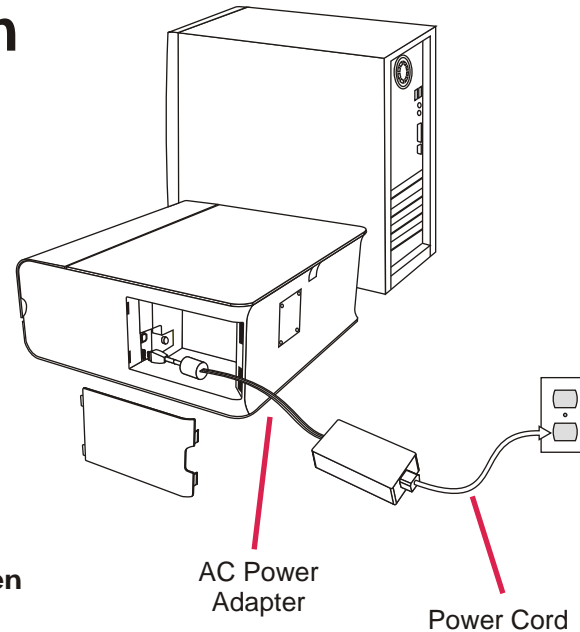
- B** Connect the power cord to the AC power adapter.

- C** Connect the AC power adapter to the printer.

- D** Connect the AC power adapter to the printer.

- E** Connect the power cord to an outlet.

! Important! Connect the USB cable only when the software prompts you to connect it!

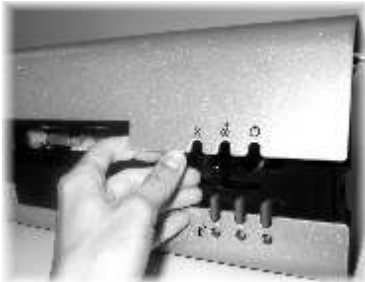


2

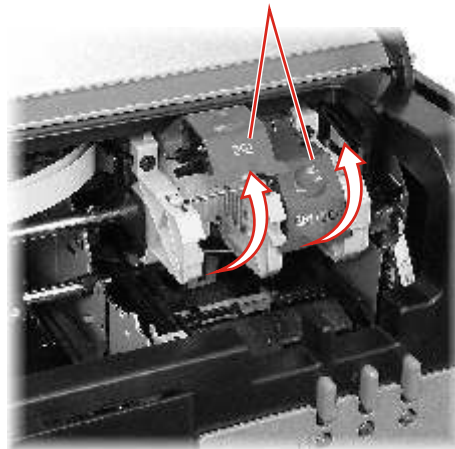
Installing the Ink Cartridges

- A** Power on the printer.

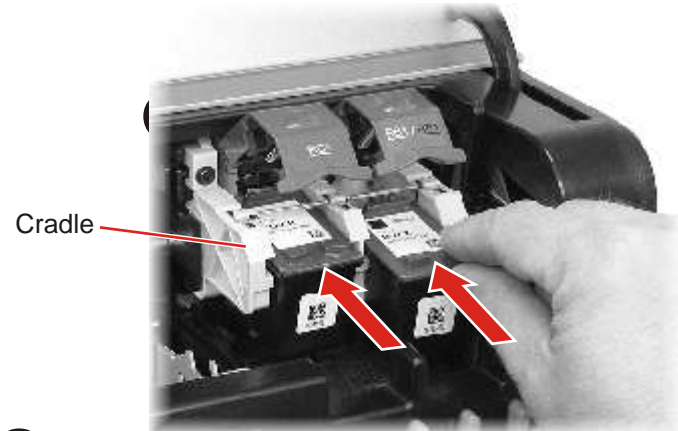
- B** Lift the access door.



- C** After the printer has stopped moving, lift both cartridge latches.



- D** Slide the matching ink cartridge into the cradle as shown.



- E** Close each cartridge latch.

- F** Close the access door.

3

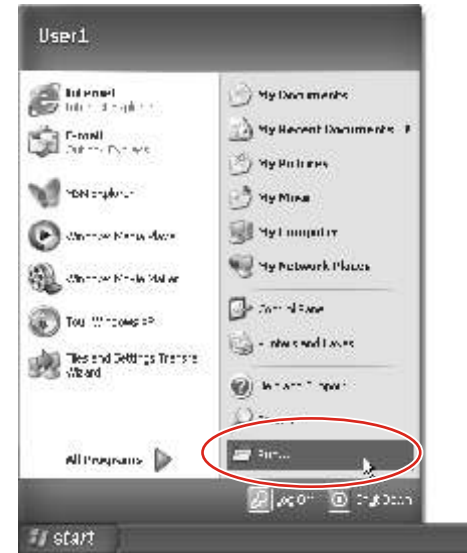
Installing the CD Designer Software

A Power the PC on.

B Insert the CD Designer software disc in the PC.



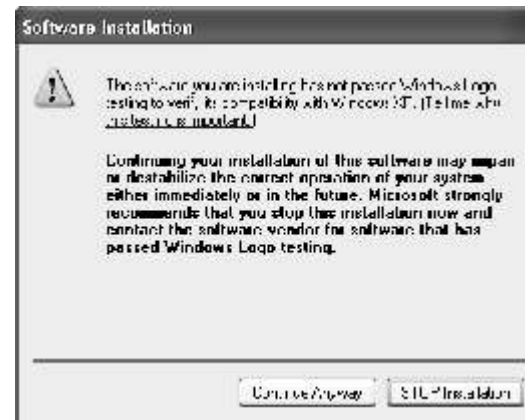
C If the software installation does not start automatically, select **Start|Run** and **Browse** and select the **Setup** file from the disc.



D When prompted to select a setup type, select **Rimage 480i Printer** as shown below.



E In Windows XP, this window prompt opens. Select **Continue Anyway** to install the required Rimage driver.



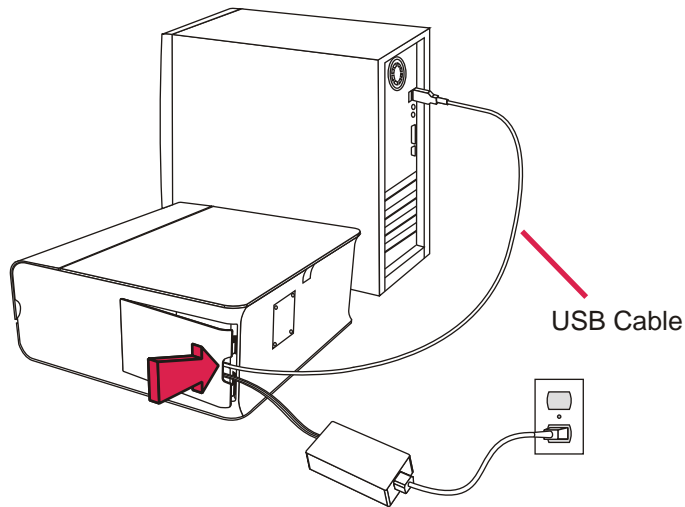
4

Installing the Printer

- A** When the Plug-n-Play window appears, complete each of the steps in this window before selecting the **Next** button. Steps 1 - 5 correspond to B - F on this page.



- B** Connect the USB from the printer to the PC as directed in Step 1 of the Plug-n-Play window. Reattach the side cover so the cables come out the opening.



Windows 2000 automatically installs the printer driver. After it finishes, go to step F.

Windows XP detects the new hardware and the Found New Hardware Wizard appears.

- C** Answer all of the dialogs before continuing to step 3 from the Plug-n-Play window.



- D** If you have an additional printer, connect the USB cable to the PC. Otherwise, go to step F.
- E** **Windows 2000** automatically installs the printer driver for the second printer. After it finishes, go to step F. For **Windows XP**, answer all of the Found New Hardware Wizard dialogs before continuing to step 5 (F).
- F** When the printer driver installation is complete, select the **Next** button on the Plug-n-Play window.



NOTE: Adobe Acrobat Reader 6.0 may automatically install.

5

Aligning the Ink Cartridges

- A** For Windows XP, select **Start|Settings|Printers and Faxes**
For Windows 2000, select **Start|Settings|Printers**




- B** Right-click on **Disc Color 480i** and select **Printing Preferences**.

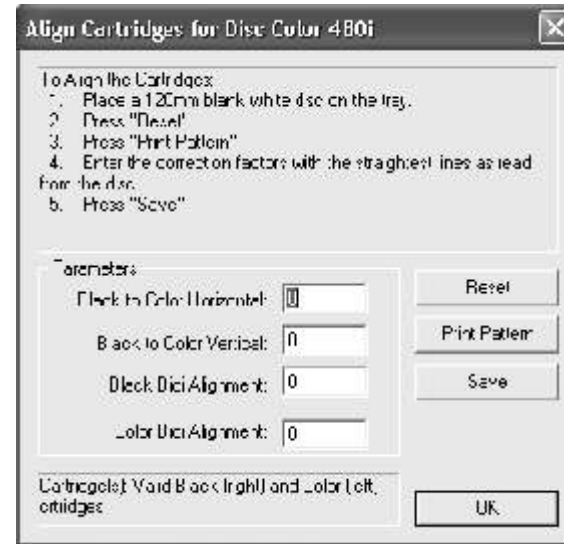



- C** Select the **Service** tab.



- D** Select the **Align Cartridges** button.

- E** Press the  button on front of the printer to open the printer tray.
- F** Follow steps 1 - 5 from this window.



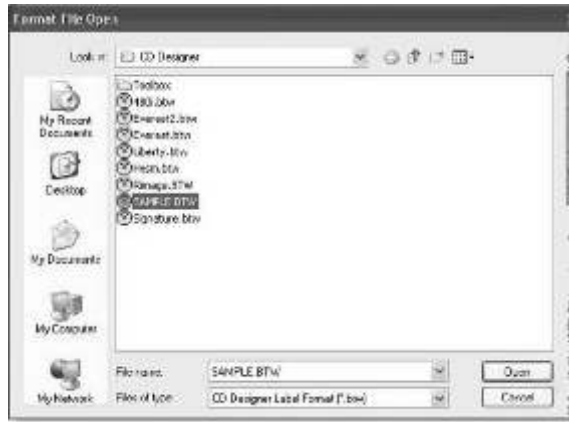
- G** Select **OK**.
- H** Close all Printing Preferences windows.
- I** Remove the disc from the printer tray.
- J** Press the  button to close the printer tray.


If you have a second printer, repeat step 5 for the second printer.



6

Printing a CD or DVD

- A** Navigate: **Start > Programs > CD Designer**
CD Designer opens.
- B** From the **File** menu, select **Open**.
- C** Navigate: **Local Disk (C:) > Program Files > Rimage > CD Designer > SAMPLE.btw**



- D** Select **Open**.
The file opens in CD Designer.
- E** From the **File** menu, select **Print**.
- F** Press the  button on the front of the printer to open the printer tray.

- G** Place a CD or DVD on the printer tray.
- H** Press the  button to close the printer tray.
The CD or DVD prints.
- I** When the CD or DVD has printed, remove it from the printer tray.
- J** Press the  button to close the printer tray.

To print additional disks, repeat steps E - H.