

USDigitalMedia

Pro Labeling Systems

Disc Studio

Quick Start

Software Guide

©2007. USDigital Media.

Installing Software

[Compatibility: PC running Windows 2000, XP, Vista]

Place the DiscStudio software disc into the disc drive of your computer. Windows will automatically detect and begin to install the software. This may take a minute to begin. If it does not automatically install browse thru your computer to the disc drive and double click SETUP.EXE to begin the installation. Typical installation will enter next and yes whenever needed and allow to install in the recommended location.

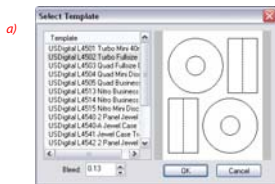
Open the Software: A shortcut will install on your desktop to **DiscStudio**. Or browse from the Windows Start menu to **USDigitalMedia > DiscStudio**.

The first time the software opens it will ask to select a default printer. Choose the printer you wish to use from your drop down menu > hit OK and the software will open. The printer can be changed at any time.

Selecting a Template

The “Select Template” button in the top right corner allows you to choose the template by paper product code, preview, or description.

Example a)

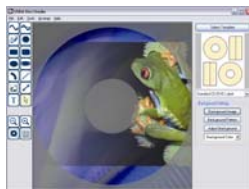
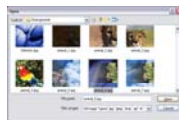


BLEED EDGES: This box also allows for changing of the printable bleed area that prints past the edges of the die cut label to allow for printer shift. Recommended bleed amount is automatically given at .13”, but can be manually adjusted by using the arrows as needed.

Backgrounds and Clipart

DiscStudio includes a large selection of backgrounds and clipart. These are stored in subfolders of the DiscStudio program folder and are shown as

thumbnails when you use the Select Background or Select Clip Art buttons. Backgrounds can be applied to either the entire CD/DVD or to any selected object, clipart (usually smaller images) is designed to be used for selected objects.



Adding Your Own Backgrounds or Clipart

Bitmap images such as logos or photographs created by other graphics programs, digital cameras, scanners or any other source can be imported to DiscStudio for use as backgrounds or clipart. While DiscStudio allows you to browse to any folder to locate images, we recommend that you put your images in the default folders to make them quicker to access. These files you import will only print at the highest quality your file is in at 100% of the image size. Resizing images larger than the native file dimensions creates pixelation and blurring which will be noticeable during print.

File Types accepted are .JPG, .BMP, .GIF, .TIF, .WMF, .PNG

Deleting a Background or Clipart Image

If you applied a background or clipart at an early stage in your label, you may not want to UNDO all the subsequent steps to delete it. To delete an image simply set the background color of the label or object to white. You can also delete clipart by simply deleting its container.

Background images and patterns are always behind all objects you've drawn. You can't move an object behind the background.

Adding Text

To add text to your label click the *Text* tool button, then move the mouse pointer to the approximate position in which you want the text to appear, and click again. There are tabs of features that will show on the right side of your program screen for entering the text, font, formats, and effects for that text.

Tools and Drawing

These tools in the left side let you draw and manipulate objects of various shapes. You can set line and fill colors and gradients, move objects in front of or behind others, select a grid to make alignment easier, etc.

To draw any object, click the button for the object's tool, then click in the drawing area. When you are done, finish the object either by double clicking on the last handle or by releasing the mouse button and clicking once in the same position (as described for each tool in the sections below).

Once the object has been created, it can be resized, moved, reshaped and its line and fill properties can be modified.

Saving a File

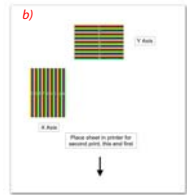
Once you've prepared your CD/DVD label, save it by clicking the *Save* button. This will open a standard Windows file dialog where you can choose the file name and location. By default, DiscStudio will save files in the *backgrounds* folder. If you want to change this, just choose any folder you want using the file dialog window. A DiscStudio folder in My Documents might be a good choice.

For applying labels properly we recommend having the appropriate label applicator to apply the label to the disc. For sheets of micro-perforated inserts simply fold back and forth at perforated edges until they can easily be ripped off. Be careful of things like tray card spines that you don't remove them, they have a larger perforation allowing for the fold.

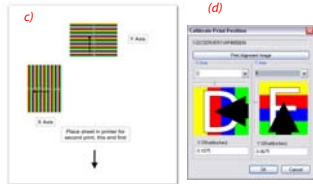
Ready to Print! Setting up your Printer Alignment

Doing a printer alignment should be one of the first steps when using this software for printing, as it will align your custom printer settings with our template placement of the label die cuts. This will get a more accurate print and keep you from losing sheets of labels. A printer alignment will need to be done whenever you change your printer.

- Choose your printer from File > Printer Setup
- Go to: File > Printer Alignment, click the "Print Alignment Image" button. *Example b)* (DO NOT HIT THE OK BUTTON YET)
- Place this printed sheet back in your printer with the arrow pointing at your printer, facing up or down, as your printer needs it to print over the same area.
- Hit the "OK" button on your Printer Alignment screen to print the SECOND sheet alignment over the FIRST print. *Example c)*



- On the printed sheet you now have an arrow pointing in the X-axis and Y-axis colored boxes pointing to a letter. In the Calibrate Print Position box still open choose the corresponding X and Y Axis letters the printed arrows are pointing at from the drop down. Inside that letter, adjust the slider to the corresponding color placement.



The print from example c) this would adjust the X-axis to D and the slider in red, and the Y-axis in F and the slider in red as shown in *example d)*.

- Hit OK to save these Printer Alignment values.
- We recommend creating a simple color filled layout and printing it on a plain sheet of paper. Hold it up behind a label sheet against a light to see if the alignment needs more adjustments.

Printing on Labels

Since you have now set up the printer alignment, printing is as simple as 1 – 2 – 3:

1. Prepare the image to be printed. Save it for future use when you're done.
2. Insert a blank sheet(s) of label stock in the printer.
3. Click the *Print* button on the DiscStudio main interface. Make sure that the correct printer and number of copies are selected, then click OK.

Your sheets will begin to print in a no time. If you need to adjust alignment you can go back to the printer alignment under File > Printer Alignment. To extend your bleed area click on Select Template in the main screen and you can increase or decrease your bleed area that allows for printer shifting of the pages.